



By Mike Wade,
President & CEO

HAVE A SAFE AND HAPPY HOLIDAY SEASON

As you enjoy the holiday season and prepare for the new year, remember to be vigilant in regards to your safety habits. Check your holiday lights for frayed cords and loose connections, and always turn off holiday lights when you leave the house or when you go to bed. Test your smoke alarms and clean or replace your furnace filter as needed. The holidays are about family and friends, and we all enjoy a little time off from work. But above all, remember to be responsible and play it safe.

Thanks to all of you who attended our Member Appreciation Breakfast in October. We may have had the largest attendance ever based on the number of pancakes that were served. The directors, employees, and I enjoyed visiting with you and listening to your ideas on how to improve the cooperative. The arts and crafts fair was a huge hit, and many of you brought documents to be discarded using our secure disposal service. It was wonderful to visit with each of you, and I look forward to seeing you in April at the annual meeting.


Our Toys for Tots campaign is in full swing. Now is the perfect time to donate a toy at one of the local toy drop locations. These toys will find their way into the hands of a deserving child in the area. Your generous donations have put smiles on the faces of thousands of children since the program began. Thank you for continuing to support our local families.

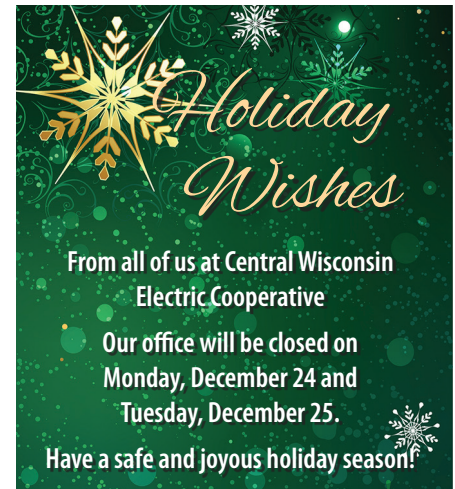
As we pause to celebrate the holiday season this year, it is time to reflect on our many accomplishments during the year. We have many things to be thankful for, and I am especially grateful to be associated with Central Wisconsin Electric Cooperative. The cooperative plays a vital role in supporting our local communities and providing our members with safe and reliable electric energy. I hope you find our services beneficial and will continue to support us as we prepare ourselves for a new year.

From all of us at Central Wisconsin Electric Cooperative, we are proud to be of service to you. We hope that you and your family are safe and warm during this holiday season. We wish you a very Merry Christmas and a Happy New Year.



Central Wisconsin
Electric Cooperative

Your Touchstone Energy® Cooperative 



ELECTRICAL SAFETY TIP OF THE MONTH

Never use an indoor extension cord for outdoor use. Use an extension cord specifically for outdoors; they are heavier and less likely to be damaged.

MY CO-OP

BOARD MEETING SUMMARY

A regular meeting of the Board of Directors of Central Wisconsin Electric Cooperative was held at the headquarters in Rosholt at 7:56 a.m. on September 27, 2018. Following is a summary of the meeting activities. The agenda, minutes of the August 26, 2018 meeting, new and terminated memberships, and the monthly safety and compliance report were approved.

Action Items

- Monthly Financial Statements and Reports were approved. Finance Committee reviewed checks written and the board and CEO expenses.
- The board agreed to continue investing in ATC as part of the fourth capital call of 2018.
- The board approved the capital credits retirement amount of \$253,849.43 for the years 1993–2013.
- The board selected the attendees for the WECA Annual Meeting, the voting delegate, and the voting delegate for the Federated Youth Foundation.
- The CEO reported on the conversion from mercury vapor lights to LED lights. The board approved modifi-

- fications to the Outdoor Lighting Service Schedule.
- The board discussed the term limits for the director-at-large position, assigning the Governance Committee to further review options.

Operations and Engineering – Ram Utilities began inspections of poles off the Wittenberg Substation. Tigerton tower will be permanently removed in the very near future. The Auto Vehicle Locator (AVL) software has been installed and is working.

Accounting and Finance – Hot weather increased sales of kWhs for the month which improves our budget outlook. Member Services – The Member Appreciation Pancake Breakfast will be held Saturday, October 27, 2018. The Prairie Project is nearing the end of our first full year of maintenance.

President and CEO – Employees recently toured the Dometar Biomass Facility in Rothschild. CWEC will begin working on budgets and goals for 2019. The board reviewed the written report of Economic Development Activity for September. Meeting adjourned at 10:12 a.m., followed by the annual Board Tour, this year traveling to the Stockbridge-Munsee Community area.



AREA KIDS NEED OUR HELP

Christmas is a time of joy, happiness, and goodwill. It is a time of giving and helping those who are less fortunate than us, especially children. Central Wisconsin Electric Cooperative kicked off their annual Toys for Tots drive at their Member Appreciation Pancake Breakfast on Saturday, October 27. The response was overwhelming; four Toys for Tots boxes were filled with toys—your generous donations were greatly appreciated.

We are happy to once again partner with the U.S Marine Corps to help make area children's Christmas a little brighter



through the Toys for Tots program. We ask you to help us spread a little Christmas joy this holiday season by donating a toy.

Last year we were able to provide toys to more than 800 area children. All indications are that the amount will increase this year. As you can image, it is a pretty daunting task to collect

that many toys. This is where CWEC members can help. Help us spread a little Christmas joy this holiday season by donating a new unwrapped toy. **All of the toys we collect are distributed locally.**

To find the collection site nearest you, please see the accompanying list. If you would like us to do the shopping for you, you can make a check to Toys for Tots and mail it to us at Central Wisconsin Electric Co-op, P.O. Box 100, Rosholt, WI 54473. If you would like to make a donation online, go to <http://iola-wi.toysfortots.org>.

Best wishes for a joyful Christmas.

2018 Toy Collection Sites—Final Toy Pick-Up Friday, December 7, 2018

<p>BIRNAMWOOD</p> <p>Banner Bank 416 Main St. Biramwood, WI 54414 715-449-2556</p>	<p>IOLA</p> <p>Premier Community Bank 505 E State Street Iola, WI 54945 715-445-4700</p> <p>Bank First 148 N. Main Street Iola, WI 54945 715-445-3211</p> <p>Iola-Scandinavia Elementary School 450 E Division Street Iola, WI 54945 715-445-2411</p> <p>Iola-Scandinavia High School 540 S Jackson Street Iola, WI 54945 715-445-2411</p> <p>Iola-Scandinavia Community Fitness & Aquatic Center 445 S Jackson Street Iola, WI 54945 715-445-2411</p> <p>The Iola Tax Place 105 Pine Crest Suite D Iola, WI 54945 715-445-4829</p>	<p>MANAWA</p> <p>Manawa Elementary School 800 Beech St. Manawa, WI 54949 920-596-2524</p> <p>Little Wolf High School 515 E 4th St. Manawa, WI 54949 920-596-2525</p> <p>Premier Community Bank 341 S Bridge St. Manawa, WI 54949 920-596-2531</p>	<p>Rosholt Elementary School 46 Randolph St. W Rosholt, WI 54473 715-677-4543</p> <p>Rosholt Middle School/High School 346 Randolph Street W Rosholt, WI 54473 715-677-4543</p>	<p>RE/MAX Lyons Real Estate 206 W Fulton St Waupaca, WI 54981 715-258-9565</p> <p>Kmart 830 West Fulton St Waupaca, WI 54981 715-258-9585</p>
<p>BOWLER</p> <p>Bowler Schools 500 S. Almon Street Bowler, WI 54416 715-793-4101</p> <p>First National Bank 102 E. Railroad Bowler, WI 54416 715-793-5200</p>		<p>MARION</p> <p>Premier Community Bank 230 Mavis Rd. Marion, WI 54950 715-754-2535</p>	<p>SCANDINAVIA</p> <p>Silver Lake Lanes N6311 State Road 49 Scandinavia, WI 54977 715-467-2700</p>	<p>WITTENBERG</p> <p>Associated Bank 501 S. Webb St. Wittenberg, WI 54499 715-253-2127</p> <p>Banner Bank 202 S. Westgor Ave. Wittenberg, WI 54499 715-253-2999</p> <p>Wagner's Shell Food Mart 504 E. Grand Ave. Wittenberg, WI 54499 715-253-6231</p> <p>Wittenberg Shell 413 N. Genesee Wittenberg, WI 54499 715-253-2888</p>
<p>CLINTONVILLE</p> <p>Mills Fleet Farm 500 S Main Street Clintonville, WI 54929 715-823-6571</p>		<p>ROSHOLT</p> <p>Central Wisconsin Electric Co-op 10401 Lystul Rd. Rosholt, WI 54473 715-677-2211</p> <p>Community First Bank 275 W. Grand Ave. Rosholt, WI 54473 715-677-4523</p>	<p>TIGERTON</p> <p>Premier Community Bank 112 US HWY 45 Tigerton, WI 54486 715-535-3300</p> <p>First National Bank 140 Cedar St. Tigerton, WI 54486 715-535-2291</p>	
<p>ELDERON</p> <p>Community First Bank 311 State Hwy 49 Elderon, WI 54429 715-454-6264</p>			<p>WAUPACA</p> <p>Mills Fleet Farm 2016 Farm Drive Waupaca, WI 54981 715-258-3851</p>	



You can find it online, in person, in all 50 states, and even sponsored on the nationally televised “Larry Smith Outdoors” show.

Mike’s Country Meats is a one-of-a-kind, family-owned and operated, quality beef jerky retailer that boasts seven amazing flavors. They have a flavor to suit everyone’s preferences, and even sell a scorching hot Carolina Reaper jerky.

However, their claim to fame wasn’t always selling beef jerky. Once upon a time, they were operating out of a garage, and back then, jerky wasn’t even their main focus.

Mike’s Country Meats used to be

called “Mike’s Wild Game Processing,” where they would process game brought in by a multitude of patrons. After realizing how successful their beef jerky recipe was, they decided to ditch processing and venture headfirst into the jerky business.

Mike’s Country Meats uses top rounds for their jerky, ensuring top-of-the-line quality. Their process for making such amazing jerky is simple. They slice, add au jus, tumble, lie out, and send to the smoke house for four hours to get the most perfect jerky possible. After cooling and cutting, the product transforms into a mouthwatering piece of jerky that will keep you coming back for more.

The delectable flavors include Carolina Reaper, Ghost Pepper, Honey Barbecue, Hot Jamaican, Maple Brown Sugar, Pepper, and Regular (teriyaki). They also have special online packages that make the perfect gift for the jerky lover in your family!

Great taste isn’t the only quality that makes Mike’s Country Meats so special.

They ship to all 50 states including Alaska and Hawaii, and while they do not traditionally ship overseas, they do ship to all military bases. Their ingredients are almost all local, with the meat, honey, and maple all coming from Wisconsin. Most of all, Mike’s Country Meats is family owned and operated, ensuring that the original recipe will always be kept intact.

Finding a local product that can compete with the major brands is hard, but in Tigerton, there is Mike’s Country Meats. Mike’s is the one-stop shop for all things jerky. To find out more, check out their website at www.mikescountrymeats.com, visit their Facebook page at “Mike’s Country Meats,” stop in person at 800 County Road M, Tigerton, or call 715-535-4741.



NEED HELP PAYING YOUR ENERGY BILLS?

Central Wisconsin Electric Cooperative’s Commitment to Community Program is designed to help households with their energy costs, including electric bills. For many Wisconsin households, energy costs place a severe and continuing stress on the family budget. To better serve our members, CWEC is joining the Wisconsin Home Energy Plus (HE+) program. This program is funded through public benefits and federal dollars to help eligible low-income households pay for home energy assistance and weatherization. Members may be eligible if they meet the HE+ program guidelines. Members should contact their local agency to determine eligibility.

County	Agency	Telephone Number
Marathon	Energy Services, Inc.	715-842-3111
Portage	Energy Services, Inc.	715-344-5999
Shawano	Dept. of Human Services	715-526-4740
Waupaca	Energy Services, Inc.	715-258-6820

HEY KIDS, GET OUT YOUR COLORS!

It’s time for our annual Christmas coloring contest. The contest is open to all kids ages 10 and under. The theme this year is Santa.

Draw a picture of Santa and mail or bring it to:

Central Wisconsin Electric Cooperative
P.O. Box 100
Rosholt, WI 54473

Please make sure to have your name, age, and phone number on the back of your picture.


We will award three prizes in two age groups: 6 and under and 7 to 10. The prizes will be first, \$25; second, \$15; and third, \$10.

The contest is open to the children of members only. Pictures must be done in crayon only.

Deadline for the pictures is Monday, December 10, so get started right away and good luck!

The drawings will be on display in the lobby at the CWEC office, so stop in and take a look at the beautiful pictures.





Give the Gift of Power!

Don't know what to give someone for Christmas? Why not give them the gift of power? Gift certificates are available at the CWEC office or on line at www.cwecoop.com.

MY CO-OP



PUBLIC NOTICE

Central Wisconsin Electric Cooperative has unclaimed patronage capital funds for former members of CWEC.

Funds for these people have been unclaimed for three years. In accordance with cooperative bylaws, after 60 days from this publication, the unclaimed funds shall be forfeited from the cooperative to be used for educational loans, scholarships, or charitable purposes.

The listing of names is published on our website: www.cwecoop.com. On the main page under Quick Links select Unclaimed Patronage Capital Checks, where you will find the **2018 Unclaimed Patronage List-pdf** at the bottom of the page in blue. If you do not have access to our website online, you may request

a listing by contacting our office during regular business hours.

If you know the whereabouts of these former members, please ask either the individual member or the estate executor to contact us at 800-377-2932. When writing to us, please include information to verify the person is the same one we are trying to locate. A previous mailing address, service address, street, road, or fire number where service was received would be helpful.

Regular business hours are from 7:30 a.m.–4 p.m., Monday–Friday. If you prefer e-mail, address your message to cwec@cwecoop.com.

We respond to all inquiries; however, due to the large volume of inquiries please be patient as we do our best to serve you, our member.

ENERGY EFFICIENCY REBATES AVAILABLE

Did you know your cooperative offers rebates for energy efficiency upgrades? If not, we're pleased to inform you we offer rebates for all sorts of upgrades including Energy Star appliance purchases, insulation, new windows, heat pumps, alternative water heaters, LED lighting, and much more. For a detailed listing please visit www.cwecoop.com or give us a call.



DO YOU DEPEND ON LIFE-SUPPORT EQUIPMENT?

While CWEC strives to maintain the best possible service with a minimum of outage time, occasional outages, either planned or uncontrolled, do occur.

We need to know the names and locations of members who depend on life-support equipment. We will make every effort to give priority to restore service to members on life-support systems. If you or a family member depends on life-support equipment, please call us at 715-677-2211 or fill out the form below and mail it to us as quickly as possible.

Yes, I depend on life-support equipment...

Name _____

Phone No. _____

Location / Account No. _____

Type of Equipment _____

Do you have an emergency standby generator to operate this equipment?

YES _____ NO _____

If you're on oxygen, how many hours of back-up do you have? _____

DATES TO REMEMBER IN DECEMBER

CWEC Toys for Tots Drive

Now through December 7

Donate a new, unwrapped toy. Toys are distributed to needy children in our area Monday–Friday, 7:30 a.m.–4 p.m. Rosholt. For more information call 715-677-2211.



4th Annual Community Christmas Tree Decorating and Lighting

Friday, December 7

7 p.m. (new time). Help kick off the holiday season in the WOW Art Park where you can join in with the choir and sing Christmas carols. Hot cider and cookies will be available. WOWSPACE, 114 Vinal St., Wittenberg. For more information call 715-253-3525 or go to www.wallsofwittenberg.com.

Christmas Craft Sale

Friday, December 7, 3–8 p.m.

Saturday, December 8, 9 a.m.–3 p.m.

Start out your month with this fun craft and bake sale, guaranteed to get your Christmas

shopping off to a good start! Find gifts for family and friends, baked goods to enjoy now or later, and a wreath to deck your halls. WOWSPACE, 114 Vinal St., Wittenberg. For more information call 715-253-3525 or go to www.wallsofwittenberg.com.

Glacier Ridge Antique Tractor Club's Annual Polonia Christmas Parade

Friday, December 14, 6 p.m., Polonia

All entries welcome, line up in Sacred Heart Church's parking lot around 5:30 p.m. For more details call Bob at 715-572-1548 or Helen at 715-592-6145.

Christmas Holiday

Office Closed: Monday, December 24, and Tuesday, December 25

Merry Christmas!





New Year's Holiday

Office Closed: Tuesday, January 1, 2019
Happy New Year!

To submit your community events email brenda.mazemke@cwecoop.com or call Brenda at 715-677-2211.

Mike Wade, President & CEO


10401 Lystul Rd., P.O. Box 100, Rosholt, WI 54473
715-677-2211 • 800-377-2932 • www.cwecoop.com

Follow us on Twitter and Facebook  

Brenda Mazemke, Editor



Central Wisconsin Electric Cooperative

Your Touchstone Energy® Cooperative 

Board of Directors

Anthony Buss, Jr., Chairman, District 1 • Tom Smith, Vice Chairman, District 1 • Elaine Eckendorf, Secretary–Treasurer, District 3
Ron Onesti, District 1 (At Large) • Lee Lehrer, District 2 • Leonard Oppor, District 2 • Sue Rombalski, District 3